



2025 Community Health Needs Assessment



Table of Contents

| | |
|---|-----------|
| Introduction | 2 |
| Mission, Vision and Customer Relations Statement | |
| Executive Summary | |
| Identification and Prioritization of the Need | |
| Addressing the Need / Creating the Plan | |
| Background | 10 |
| 2022 CHNA Overview/Evaluation of Prior Impact | |
| Definition of the Community/Service Area Key Facts | |
| Social Determinants of Health | |
| Process Methods and Accountability | |
| Primary Data | |
| Description of the Community Health Needs Identified | |
| Resources Available to Meet Priority Health Needs | |
| Documenting and Communicating Results | |
| Priority 1: | |
| Access to Mental Health: Improve access to and knowledge of mental health services. | 28 |
| Supporting Data | |
| Priorities and Strategies | |
| Anticipated Impacts | |
| Programs and Resources | |
| Planned Collaboration | |
| Priority 2: | |
| Workforce Development/Youth: Develop relationships with schools to improve student knowledge of health topics, including health careers. | 32 |
| Supporting Data | |
| Priorities and Strategies | |
| Anticipated Impacts | |
| Programs and Resources | |
| Planned Collaboration | |
| Priority 3: | |
| Health Improvement: Develop educational offerings and support to help people enhance their knowledge of ways to improve their health. | 36 |
| Supporting Data | |
| Priorities and Strategies | |
| Anticipated Impacts | |
| Programs and Resources | |
| Planned Collaboration | |

Copyright ©2025 by the Illinois Critical Access Hospital Network (ICAHN). All rights reserved. The contents of this publication may not be copied, reproduced, replaced, distributed, published, displayed, modified, or transferred in any form or by any means except with the prior permission of ICAHN. Copyright infringement is a violation of federal law subject to criminal and civil penalties.



Introduction

Fairfield Memorial Hospital has been serving the healthcare needs of the surrounding area since 1950. Upon opening, Fairfield Memorial Hospital was equipped with 84 beds and was staffed with six resident physicians and 24 registered nurses. In 1966, Fairfield Memorial Hospital announced its expansion project, which consisted of attached offices adjoining the hospital, now known as the Mattie B. Rinard Building. In 1975, Fairfield Memorial Hospital opened its Intensive Care Unit.

In 1998, Fairfield Memorial Hospital completed a \$4.1 million expansion project. This expansion included a new surgical and emergency department, as well as an expansion of the laboratory and imaging departments. Additionally, the entire second floor was converted to all-private rooms. In August 2008, FMH opened Horizon Healthcare, a certified hospital-based rural health clinic, in a temporary building until the construction of the new FMH Medical Arts Complex was completed. In May 2011, FMH opened the Medical Arts Complex, a 25,468-square-foot facility that includes Horizon Healthcare, specialist suites, a boardroom, and community and education rooms.

In February 2020, Fairfield Memorial Hospital broke ground on its \$21 million expansion project, which included a new Emergency Department with two dedicated psychiatric beds and an additional four exam rooms.

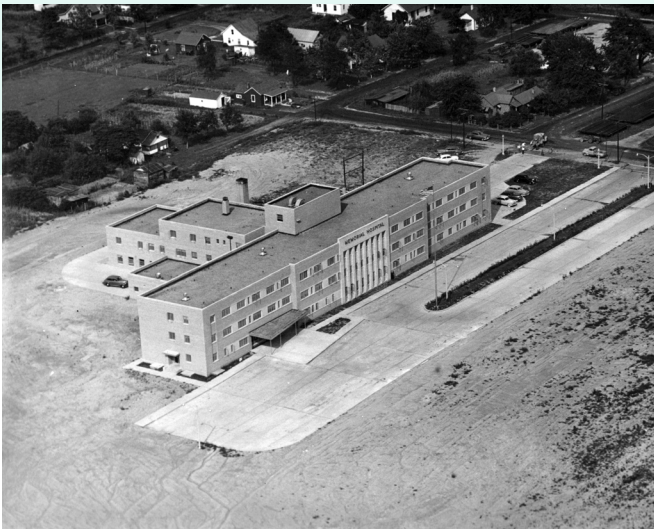
In 2023, Fairfield Memorial Hospital opened its new state-of-the-art Surgical Pavilion. With this new addition, Fairfield Memorial Hospital built a new Skilled Care Unit, added two additional operating rooms, expanded Same Day Surgery Department, a new Emergency Department to have nine rooms instead of the previous five rooms, a new Urgent Care 4-room department, and a new outpatient clinic to be used for specialty physician offices.

Fairfield Memorial Hospital is a fully accredited, not-for-profit critical access hospital. The hospital has 25 acute-care beds and a workforce of over 250 employees. The medical staff at Fairfield Memorial Hospital comprises over 90 credentialed physicians and healthcare providers. Fairfield Memorial Hospital is accredited by The Joint Commission, which means that it voluntarily sought inspection by The Joint Commission to survey the quality of patient care, services, equipment, and facilities.

Today, Fairfield Memorial Hospital provides numerous services including a 30-bed Skilled Care Unit, Home Health services, 24-hour emergency care, Intensive Care Unit, Swing Bed, Urgent Care, designated Comfort Care rooms, surgical services, diagnostic imaging (CT scanning, ultrasound, 3-Digital Mammography, PET-CT, nuclear medicine, bone density, MRI, general x-ray procedures), pain management, cardiac rehabilitation, 24-hour laboratory services, diabetes education, sleep studies, physical therapy, occupational therapy, speech language pathology, pulmonary rehabilitation, and respiratory therapy.

In 2025, Fairfield Memorial Hospital is celebrates 75 years of caring for the community.

Fairfield Memorial Hospital's commitment – and impact – are evident in the growth and progress it is experiencing, which is distinct from national trends in rural health.



Mission, Vision and Customer Relations Statement

Mission

To positively influence the health of those we serve.

Vision

People Caring for People

- » Respect for Every Individual
- » Delivery of Quality Care
- » Committed to the Pursuit of Excellence

Customer Relations Statement

It is the effort of all Fairfield Memorial Hospital employees working together, each doing his or her part, that results in quality patient care, positive working relationships, and overall patient satisfaction. The facility, therefore, expects from you:

1. Conscientious service that supports the mission of the facility by recognizing the dignity and unique value of each individual.
2. Cooperation with supervisors, co-workers, workers of other departments, and administrative staff in the best interest of the patients, their families, and other guests of the facility.
3. Compliance with a strong sense of accountability, responsibility, and integrity in performing your duties.
4. Demonstration of a professional, friendly, considerate, and helpful manner toward patients, their families, visitors, physicians, members of the community, fellow employees, supervisors, and all other guests of the facility.
5. Recognition that confidential information concerning a patient or any other confidential aspect of your work must not be discussed with (or overheard by) any unauthorized person.
6. Expression of respect for others through compassionate words and actions.
7. Practicing the requirements listed in the Standards for Service Excellence.



Executive Summary

Provisions in the Affordable Care Act (ACA) require charitable Fairfield Memorial Hospital to conduct a Community Health Needs Assessment (CHNA). The Community Health Needs Assessment (CHNA) is a systematic process that involves the community in identifying and analyzing community health needs, as well as community assets and resources, to plan and act upon priority community health needs.

This assessment process yields a Community Health Needs Assessment (CHNA) report, which supports Fairfield Memorial Hospital in planning, implementing, and evaluating its strategies and community benefit activities. The Community Health Needs Assessment was developed and conducted in partnership with community representatives by a consultant provided through the Illinois Critical Access Hospital Network (ICAHN).

ICAHN is a not-for-profit 501(c)(3) corporation established in 2003 to share resources, promote education, and improve operational efficiencies, thereby enhancing healthcare services for member critical access and rural Fairfield Memorial Hospitals and their communities.

ICAHN, with 60 member hospitals, is an independent network governed by a nine-member board of directors, with standing and project development committees facilitating the network's overall activities. ICAHN continually strives to strengthen the capacity and viability of its members and rural health providers.

This Community Health Needs Assessment will serve as a guide for planning and implementing healthcare initiatives that will enable Fairfield Memorial Hospital and its partners to address best the emerging health needs of Fairfield, Illinois, and the surrounding area. The CHNA process was coordinated by the Executive Assistant/Staff Accountant.

Four focus groups were convened to discuss the state of overall health and wellness in Fairfield Memorial Hospital's service area, identifying health concerns and needs in the delivery of healthcare and health services to improve wellness and reduce chronic illness among all residents. The focus groups included representatives from healthcare providers, community leaders, community service providers, schools, public health, and other relevant stakeholders. Several members of these groups provided services to the underserved and unserved people as part of their roles.

The findings of the focus groups, along with secondary data analyzed by the consultant, were presented to a focus group for the identification and prioritization of the significant health needs facing the community.





Identification and Prioritization of the Need

Three priority areas were considered based on the community survey, onsite meetings, and secondary data. The team discussed each focus area, and after their review and discussion, the identification and prioritization group advanced the goals and actions:

1. **Access to Mental Health:** Improve access to and knowledge of mental health services.
2. **Workforce Development/Youth:** Develop relationships with schools to improve students' knowledge of health topics, including health careers.
3. **Health Improvement:** Develop educational offerings and support to help people enhance their knowledge of ways to improve their health.

Senior staff at Fairfield Memorial Hospital identified and prioritized potential actions to address the needs.

Addressing the Need / Creating the Plan

The group addressed the needs with the following strategies:

- » Leveraging the current psychiatric nurse practitioner to provide education and mental health services.
- » Create a campaign/education to reduce the stigma associated with seeking mental health treatment.
- » Develop community education for common mental health concerns such as depression and anxiety.
- » Investigate a partnership with local schools to provide education on healthy habits, mental health, and health careers.
- » Increase job shadowing opportunities.
- » Increase education on sexual health and the rise in sexually transmitted infections.
- » Leverage the board-certified diabetes advanced practice provider to develop community education on diabetes and healthy eating habits.
- » Investigate the addition of a diabetes support group at the hospital.
- » Develop educational methods that can be accessed in various ways to address health issues.

Background

The Community Health Needs Process is conducted every three years. Fairfield Memorial Hospital has taken the following actions in response to issues identified and prioritized, as well as the implementation strategy developed to address them.

Fairfield Memorial Hospital CHNA 2022

Three needs were identified as significant health needs and prioritized:

Priority #1

Mental Health and Substance Abuse Services

Goals:

- » Improve access to transportation for persons with mental health and substance abuse conditions.
- » Improve access to mental health providers.
- » Provide educational offerings about mental health and substance abuse issues.

Actions:

- » A full-time psychiatrist was hired and began practice in March 2023 but was forced to retire in February 2024 due to health issues.
- » A full-time psychiatric nurse practitioner was hired and started practicing in December 2024.
- » Provided scholarship funds to a local student to complete their master's in social work (MSW). The candidate will complete their MSW in 2025 to become a Licensed Clinical Social Worker.
- » LCSW was hired and started seeing patients in January 2024. There is an open and active recruitment for a Licensed Clinical Social Worker (LCSW).
- » Increased education for parents and young people about mental health and substance abuse.
- » Mental Health First Aid training is offered in the community.

Evaluation of Prior Impact/Results:

- » Access to mental health providers has improved slightly.

| Report Area | Access to Mental Health Providers 2022 | Access to Mental Health Providers 2025 |
|---------------|--|--|
| Fairfield | 128.9 | 138.3 |
| Illinois | 245.8 | 314.5 |
| United States | 261.6 | 313.6 |

Data Source: Centers for Medicare and Medicaid Services, National Plan and Provider Enumeration System

- » The percentage of adults reporting 14 or more days in the past 30 when their mental health was “not good” did not improve. The impact of COVID-19 on the community and society should be taken into consideration.

| Report Area | Poor Mental Heath 2022 | Poor Mental Heath 2022 |
|---------------|------------------------|------------------------|
| Fairfield | 15.5% | 17.5% |
| Illinois | 13.13% | 15.4% |
| United States | 13.6% | 15.8% |

Data Source: Centers for Disease Control and Prevention, Behavioral Risk Factor Surveillance System

- » Mental Health First Aid education was presented to the community by a partner organization.
- » LSW Morgan Wolfe presented information on the Therapeutic Benefits of Grounding as part of the Edward County Farm Bureau’s Sustaining the Human Spirit in Rural Life.
- » Senior Life Solutions visits local Assisted Living and Senior Citizens Centers to promote mental health awareness to older adults.

Priority #2 Transportation

Goals:

- » Strengthen local EMS providers.
- » Provide additional transportation access for patients in the community.

Actions:

- » Obtained grant funds from ICAHN for local EMS training and education.
- » Explored partnerships with EMS to improve financial outcomes.
- » Partnered with RIDES Mass Transit to serve the Fairfield community.

Evaluation of Prior Impact/Results:

- » EMS team members are provided with BLS, ACLS, and PALS education at FMH at no cost.

Priority #3

Improve access to Physical Therapy and develop opportunities for recreation and exercise.

Goals:

- » Improve access to physical therapy services at FMH.
- » Enhance community access to recreational and exercise opportunities for all ages and seasons.

Actions:

- » Developed proposals for a new building and renovation for a therapy center. These proposals were denied due to cost. Funding is still being sought for this project.
- » A “lunch and learn” event was held via Facebook Live, which included education on what Speech Therapy services entail and the types of conditions they can assist with.

Evaluation of Prior Impact/Results:

| Report Area | No Leisure Time Physical Activity 2022 | No Leisure Time Physical Activity 2025 |
|---------------|--|--|
| Fairfield | 19.7% | 14.5% |
| Illinois | 20.8% | 19.6% |
| United States | 22.0% | 19.5% |

Data Source: Centers for Disease Control and Prevention, National Center for Chronic Disease Prevention and Health Promotion.

| Report Area | Obesity 2022 | Obesity 2025 |
|---------------|--------------|--------------|
| Wayne County | 23.8% | 37% |
| Illinois | 27.8% | 34% |
| United States | 27.6% | 34% |

Data Source: County Health Rankings and Roadmaps, 2025

| Report Area | 2023 | 2024 | 2025 YTD (through May) |
|--------------------|--------|--------|---------------------------|
| FMH Therapy Visits | 20,747 | 27,051 | 26,771 |

Data Source: Fairfield Memorial Hospital EMR

- » A registered Dietitian spoke at various schools and events promoting healthy dietary lifestyles.
- » A Lunch and Learn event was held live on Facebook, providing education about Speech Therapy services, including a discussion on the types of conditions they can assist with.
- » Therapy Staff conducts free pre-impact concussion testing annually for the local junior football teams. Each year, over 100 children participate.
- » The RHC providers provide school and sports physicals at no out-of-pocket cost at school registration events.
- » Members of the FMH team presented education to the 2nd-year IECC nursing students on a variety of topics. For instance, an FMH Registered Dietitian presented on Using Food to Feel Your Best.

LUNCH & LEARN

Join us on Facebook Live
Tuesday, September 24th
at 12pm

April Best, SLP and Amelia Byars, SLP,
will join us on Facebook Live to discuss the
services offered in Speech Language Therapy
at Fairfield Memorial Hospital!

**FAIRFIELD
MEMORIAL
HOSPITAL**

BACK to SCHOOL

SCHOOL AND SPORTS PHYSICALS

**NO OUT OF POCKET COST!!
OFFERED AT ALL LOCATIONS!**

Horizon Healthcare
Fairfield Medical Clinic
213 NW 10th Street - Fairfield IL

Horizon Healthcare
Cisne Medical Clinic
413 Park Street - Cisne IL

Horizon Healthcare
Grayville Medical Clinic
319 W Commerce Street - Grayville IL

Horizon Healthcare
Carmi Medical Clinic
1103 West Main Street - Carmi IL

June 1st- September 15th

We will also be offering physicals at various
school registrations with more information to come!

Call 618-842-4617 to schedule an appointment.

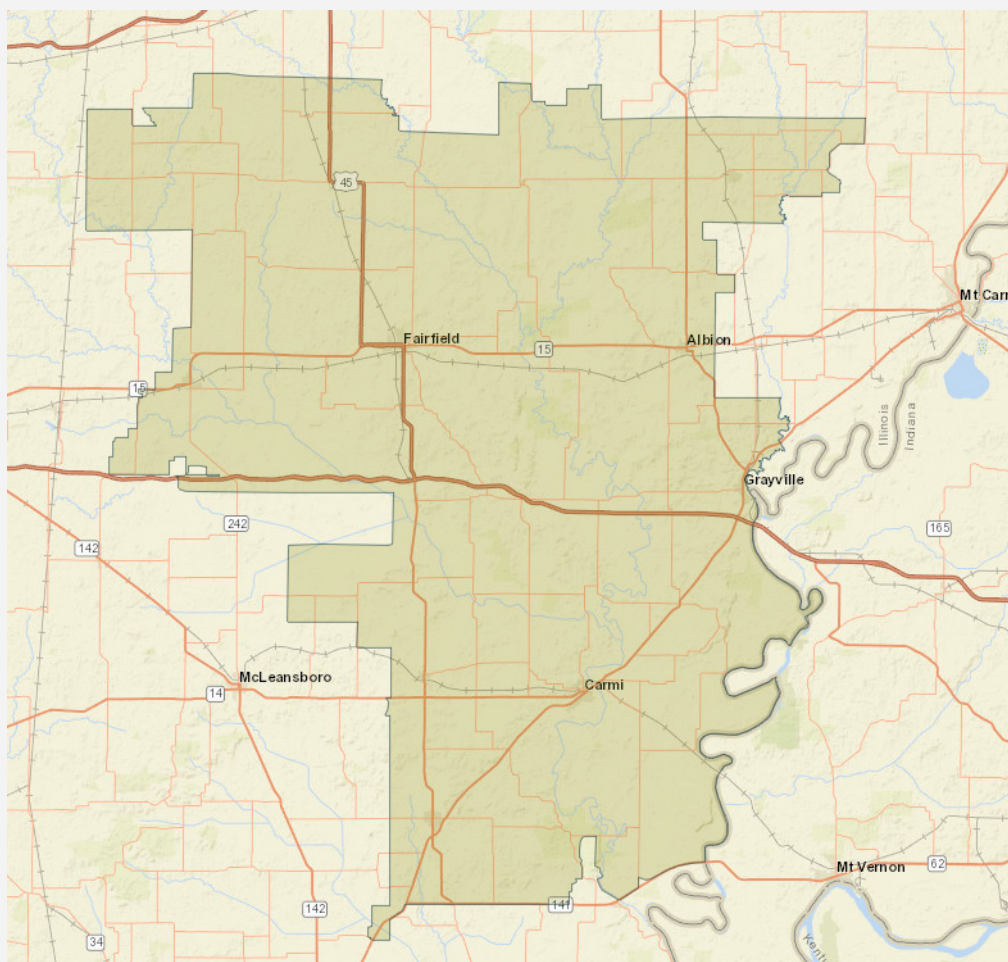
Walk-ins are always welcome!

FAIRFIELD MEMORIAL HOSPITAL
EXCELLENCE IN COMMUNITY HEALTHCARE

Fairfield Memorial Hospital Service Area

For this Community Health Needs Assessment (CHNA), Fairfield Memorial Hospital has defined its primary service area and populations as the general population within the geographic area surrounding Fairfield, Illinois, as outlined below. Fairfield Memorial Hospital's patient population includes all individuals who receive care, regardless of insurance coverage or eligibility for assistance.

A total of 34,606 people reside in the 1,326.32 square mile report area defined for this assessment, according to the U.S. Census Bureau's 2018-2022 American Community Survey 5-year estimates. The population density for this area, estimated at 26 people per square mile, is less than the national average population density of 94 people per square mile.

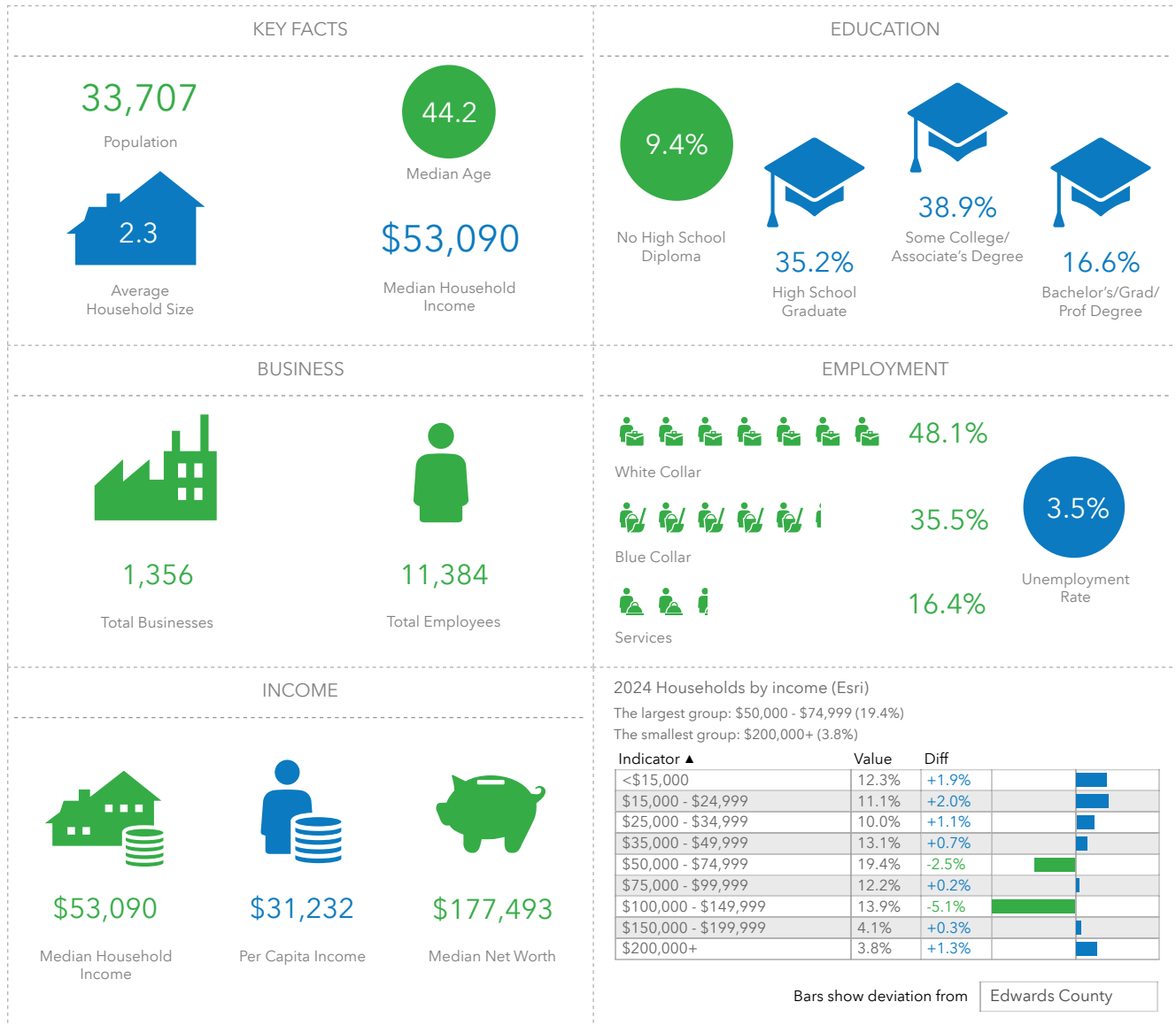


The service area, defined by zip code data, includes the following rural communities:

- » Fairfield
- » Carmi
- » Cisne
- » Albion
- » Barnhill
- » Burnt Prairie
- » Ellery
- » Golden Gate
- » Mills
- » Shoals
- » Geff
- » Simms
- » Mount Erie
- » Grayville
- » Wayne City
- » Enfield
- » Johnsonville
- » Norris City
- » Crossville
- » Rinard
- » Springerton
- » West Salem

Key Facts

21 ZIP Codes
Geography: ZIP Code



Source: This infographic contains data provided by Esri (2024, 2029), Esri-Data Axle (2024). © 2025 Esri

The average household size in the area, at 2.28, is lower than both the state of Illinois and the United States. The median age is 44.2 years, which is higher than the median age in Illinois and the United States. The largest educational segment consists of high school graduates, followed by those with some college education. 10.49% of the population has no high school diploma or GED, and 33.63% of the community's population has only a high school degree. Unemployment at the time of writing was 3.9%, which is under both the State of Illinois and the United States unemployment rate averages.

The average household income for the service market area, based on the latest 5-year American Community Survey estimates, was \$69,666. This is significantly under the state (\$108,873) and United States (\$105,833) averages.

Social Determinants of Health (SDoH)

The data and discussion on the following pages will examine the social determinants in the Fairfield Memorial Hospital service area and provide insight into the complexity of circumstances that affect physical and mental well-being. The infographic provides a snapshot of the at-risk population served by FMH.

The CDC describes social determinants of health as conditions in the places where people live, learn, work, and play that affect a wide range of health and quality of life risks and outcomes. Healthy People 2030 uses a place-based framework that outlines five key areas of SDoH:

Healthcare Access and Quality includes access to healthcare overall, primary care, health insurance coverage, health literacy, and compliance with recommended screenings and incidents of certain health-related conditions.

Education Access and Quality which includes high school graduation rates, enrollment in higher education, educational attainment in general, language and literacy, and early childhood education and development.

Social and Community Context includes the incidents of homelessness, teen birth rates, juvenile arrest rates, and the incidents of young people not in school and not working.

Economic Stability includes average household income, rates of unemployment, cost of living, people living in poverty, employment, food security, and housing stability.

Neighborhood and Built Environment include the cost and quality of housing, access to transportation, access to healthy food, air and water quality, broadband access, access to fitness and recreation facilities, walkability, and rates of crime and violence.



AT RISK POPULATION PROFILE

21 ZIP Codes

33,707

Population

14,463

Households

2.28

Avg Size
Household

44.2

Median
Age

\$53,090

Median Household
Income

\$126,425

Median Home
Value

61

Wealth
Index

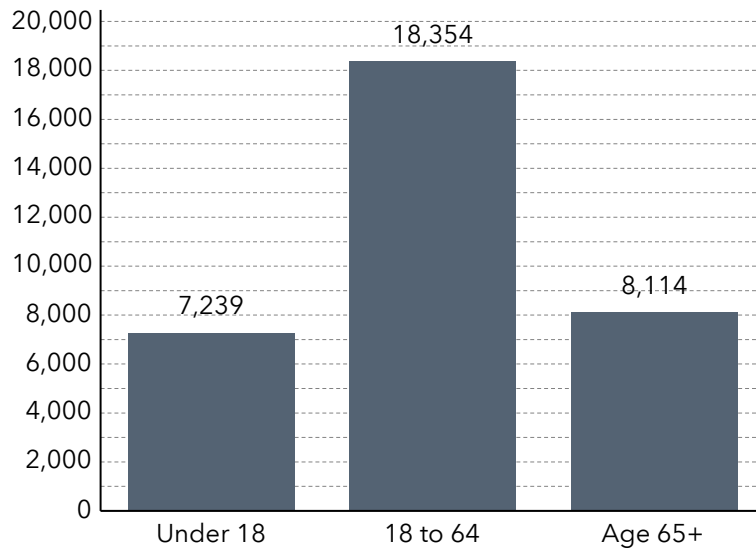
157

Housing
Affordability

14

Diversity
Index

POPULATION BY AGE



AT RISK POPULATION



5,067

Households With
Disability



8,114

Population 65+



1,048

Households
Without Vehicle

POVERTY AND LANGUAGE



15%

Households Below
the Poverty Level



2,220

Households Below
the Poverty Level



4

Pop 65+ Speak
Spanish & No English

POPULATION AND BUSINESSES



31,008

Daytime
Population



1,356

Total
Businesses



11,384

Total
Employees

| Language Spoken (ACS) | Age 5-17 | 18-64 | Age 65+ | Total |
|--------------------------------------|----------|--------|---------|--------|
| English Only | 5,539 | 18,691 | 7,743 | 31,973 |
| Spanish | 72 | 285 | 7 | 364 |
| Spanish & English Well | 68 | 242 | 1 | 311 |
| Spanish & English Not Well | 4 | 40 | 2 | 46 |
| Spanish & No English | 0 | 3 | 4 | 7 |
| Indo-European | 203 | 363 | 40 | 606 |
| Indo-European & English Well | 203 | 349 | 38 | 590 |
| Indo-European & English Not Well | 0 | 7 | 2 | 9 |
| Indo-European & No English | 0 | 7 | 0 | 7 |
| Asian-Pacific Island | 5 | 18 | 29 | 52 |
| Asian-Pacific Isl & English Well | 5 | 12 | 22 | 39 |
| Asian-Pacific Isl & English Not Well | 0 | 6 | 0 | 6 |
| Asian-Pacific Isl & No English | 0 | 0 | 7 | 7 |
| Other Language | 0 | 16 | 0 | 16 |
| Other Language & English Well | 0 | 16 | 0 | 16 |
| Other Language & English Not Well | 0 | 0 | 0 | 0 |
| Other Language & No English | 0 | 0 | 0 | 0 |



Process Methods and Accountability

ESTABLISHING THE CHNA INFRASTRUCTURE AND PARTNERSHIPS

Data Collection

Description of Data Sources – Quantitative/Secondary Data

Quantitative (secondary) data is collected from many resources, including, but not restricted to, the following:

| Source | Description |
|--|---|
| Behavioral Risk Factor Surveillance System | The largest, continuously conducted telephone health survey in the world. It enables the Center for Disease Control and Prevention (CDC), state health departments, and other health agencies to monitor modifiable risk factors for chronic diseases and other leading causes of death |
| SparkMap | An online mapping and reporting platform powered by the Center for Applied Research and Engagement Systems (CARES) at the University of Missouri. |
| U.S. Census | National census data is collected by the US Census Bureau every 10 years. |
| Centers for Disease Control | Through the CDC's National Vital Statistics System, states collect and disseminate vital statistics as part of the US's oldest and most successful intergovernmental public health data sharing system. |
| County Health Rankings | Each year, the overall health of each county in all 50 states is assessed and ranked using the latest publicly available data through a collaboration of the Robert Wood Johnson Foundation and the University of Wisconsin Population Health Institute. |
| American Communities Survey | A product of the U.S. Census Bureau which helps local officials, community leaders, and businesses understand the changes taking place in their communities. It is the premier source for detailed population and housing information about our nation. |
| Illinois Department of Employment Security | The state's employment agency that collects and analyzes employment information. |

Secondary data is initially collected through the Spark Map and/or ESRI systems and then reviewed for accuracy. Questions raised by the data reported from those sources are compared with other federal, state, and local data sources to resolve or reconcile potential issues with reported data.

Secondary data is available in a separate document titled “Fairfield Memorial Hospital 2025 Secondary Data.”

| Source | Description |
|---|--|
| National Cancer Institute | Coordinates the National Cancer Program, which conducts and supports research, training, health information dissemination, and other programs with respect to the cause, diagnosis, prevention, and treatment of cancer, rehabilitation from cancer, and the continuing care of cancer patients, and the families of cancer patients |
| Illinois Department of Public Health | IDPH is the state agency responsible for preventing and controlling disease and injury, regulating medical practitioners, and promoting sanitation. |
| Health Resources and Services Administration | The US Department of Health and Human Services develops health professional shortage criteria for the nation and uses that data to determine the location of Health Professional Shortage Areas and Medically Underserved Areas and Populations. |
| Local IPLANS | The Illinois Project for Local Assessment of Needs (IPLAN) is a community health assessment and planning process conducted every five years by local health jurisdictions in Illinois. |
| ESRI (Environmental Systems Research Institute) | An international supplier of Geographic Information System (GIS) software, web GIS and geodatabase management applications. ESRI allows for specialized inquiries at the zip code, or other defined, level. |
| Illinois State Board of Education | The Illinois State Board of Education administers public education in the state of Illinois. Each year, it releases school “report cards” which analyze the makeup, needs, and performance of local schools. |
| United States Department of Agriculture | USDA, among its many functions, collects and analyzes information related to nutrition and local production and food availability. |

Primary Data

Two focus groups were convened at Fairfield Memorial Hospital in March 2025. Thirteen community members participated, representing local service groups, healthcare providers, and schools. A complete listing of participants is in the Secondary Data document.

Anecdotal data collected from the focus groups revealed the following:

The top five (5) strengths:

- » Fairfield Memorial Hospital staff/culture/service/quality
- » Strong schools
- » Strong sense of community
- » Nice parks
- » Access to primary care/mental health

The top five (5) opportunities that need to be addressed:

- » Mental health/Substance abuse, including crisis needs and needs in youth
- » Safe and affordable housing
- » Economic improvement
- » Transportation
- » Services at FMH

The top five (5) aspirations:

- » Improvement in the economy of the community
- » Resources would be available for the homeless/hungry
- » Recreational resources for all ages
- » Improved access to mental health services
- » Increased specialty care access in the community

Description of the Community Health Needs Identified

After their review and discussion, the identification and prioritization group advanced the following areas of focus:

Priority #1

Access to Mental Health: Improve access to, and knowledge of, mental health services.

Priority #2

Workforce Development/Youth: Develop relationships with schools to improve students' knowledge of health topics, including health careers.

Priority #3

Health Improvement: Develop educational offerings and support to help people enhance their knowledge of ways to improve their health.

Resources Available to Meet Priority Health Needs

HOSPITAL RESOURCES

- » Fairfield Memorial Hospital Executive and Leadership Teams
- » Primary Care and Mental Health providers
- » Marketing
- » Community Outreach Director
- » Laboratory
- » Diabetic Educator

HEALTHCARE PARTNERS OR OTHER RESOURCES, INCLUDING TELEMEDICINE

- » Health Department
- » Mental Health agencies, providers, and organizations

COMMUNITY RESOURCES

- » Schools
- » Community action agencies
- » Community organizations
- » Faith-based organizations
- » Local government leaders
- » Law Enforcement

Documenting and Communicating Results

This CHNA Report will be available to the community on the Fairfield Memorial Hospital's public website, www.fairfieldmemorial.org.

A hard copy may be reviewed at the Fairfield Memorial Hospital by inquiring at the information desk at the main entrance.

No written comments were received regarding the Fairfield Memorial Hospital facility's most recently conducted Community Health Needs Assessment (CHNA) or the adopted Implementation Strategy. A method for retaining written public comments and responses exists, but none have been received.

Planning Process

The Implementation Strategy was developed through a facilitated meeting involving key administrative staff of Fairfield Memorial Hospital in May 2025. The group reviewed the needs assessment process completed to that point and considered the prioritized significant needs and supporting documents. They also evaluated internal and external resources that could potentially address the current prioritized needs.

The group then considered each of the prioritized needs. For each of the priority areas, Fairfield Memorial Hospital has identified the actions it intends to take, along with the anticipated impact of these actions, the resources it plans to commit to these actions, and the external collaborators it intends to cooperate with to address the needs.

The plan will be evaluated through periodic reviews of measurable outcome indicators, in conjunction with annual reviews and reporting.



Implementation Strategy

The group addressed the needs with the following strategies:

- Priority #1**
Access to Mental Health: Improve access to, and knowledge of, mental health services.

INDICATORS THAT SUPPORT THIS PRIORITY

- » 15.22% of the community survey respondents have sought mental health care in the past 12 months, and an additional 6% needed help but did not know how to access it.
- » Access to mental health resources was identified in the onsite group SOAR evaluation as the top opportunity in this community. Almost 60% of the respondents named access to mental health as one of the top five most important health issues in the community.
- » Access to Mental Health providers is lower than the state or national average.

| Report Area | Access to Mental Health Providers |
|---------------|-----------------------------------|
| Fairfield | 138.3 |
| Illinois | 314.5 |
| United States | 313.6 |

Data Source: Centers for Medicare and Medicaid Services, CMS - National Plan and Provider Enumeration System

- » The number of Poor Mental Health Days self-reported by the Centers for Disease Control and Prevention, Behavioral Risk Factor Surveillance System for this community is 5.2/30. The state average is 4.4.

- » The percentage of adults ages 18+ who state they have at least 14/30 days when their mental health is “not good” is elevated.

| Report Area | Poor Mental Health |
|---------------|--------------------|
| Fairfield | 17.5% |
| Illinois | 15.4% |
| United States | 15.8% |

Data Source: Centers for Disease Control and Prevention, Behavioral Risk Factor Surveillance System

- » The rate of depression is higher in the dually eligible Medicare/Medicaid population and the adult population aged 18+.

| Report Area | Depression Medicare | Depression Dual Eligible | Depression Adults 18+ |
|---------------|---------------------|--------------------------|-----------------------|
| Fairfield | 15% | 29% | 23% |
| Illinois | 15% | 24% | 19% |
| United States | 17% | 27% | 20.7% |

Data Sources: Centers for Medicare and Medicaid Services, Mapping Medicare Disparities Tool and Centers for Disease Control and Prevention, Behavioral Risk Factor Surveillance System

ACTIONS FAIRFIELD MEMORIAL HOSPITAL INTENDS TO TAKE TO ADDRESS THE HEALTH NEEDS

- » Promotion of the resources available at Fairfield Memorial. Fairfield employs one Psychiatric Nurse Practitioner.
- » Develop a campaign for the community that addresses the stigma associated with seeking mental health treatment.
- » Partner with schools to increase awareness of available resources and help normalize the need for mental health services when necessary.
- » Provide “lunch and learn” educational offerings to the community on topics related to mental health, such as work-life balance, depression, and anxiety.
- » Continue recruiting additional mental health providers.

ANTICIPATED IMPACTS OF THESE ACTIONS

- » Improved knowledge of the mental health resources available at FMH.
- » Reduction of the stigma of seeking mental health services.
- » People will have improved knowledge of the tools and resources available in Fairfield and the surrounding communities if they need mental health or substance abuse services.

PROGRAMS AND RESOURCES THAT THE HOSPITAL PLANS TO COMMIT TO ADDRESSING THE HEALTH NEEDS

- » Fairfield Memorial Hospital leadership
- » Rural Health Clinic staff and providers
- » Senior Life Solutions Outpatient Geriatric Mental Health Services
- » Health Educators
- » Community Outreach Director

PLANNED COLLABORATION BETWEEN THE HOSPITAL AND OTHER FACILITIES OR ORGANIZATIONS:

- » Schools
- » Health Department
- » Mental Health Providers
- » Employers



Priority #2

Workforce Development/Youth: Develop relationships with schools to improve students' knowledge of health topics, including health careers.

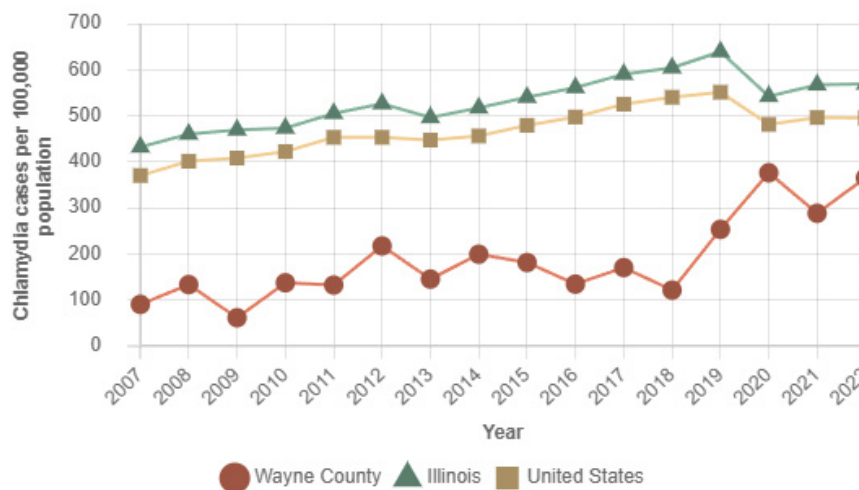
INDICATORS THAT SUPPORT THIS PRIORITY

» The teen birth rate is significantly higher than the state or national average.

| Report Area | Teen Birth Rates / 1,000 Females |
|---------------|-------------------------------------|
| Fairfield | 27.5 |
| Illinois | 14.7 |
| United States | 16.6 |

Data Source: Centers for Disease Control and Prevention

» Sexually transmitted diseases (specifically chlamydia) are on the rise in the community.



Data Source: Centers for Disease Control and Prevention

- » The number of young people aged 16-19 not currently working and not in school is above state and national norms.

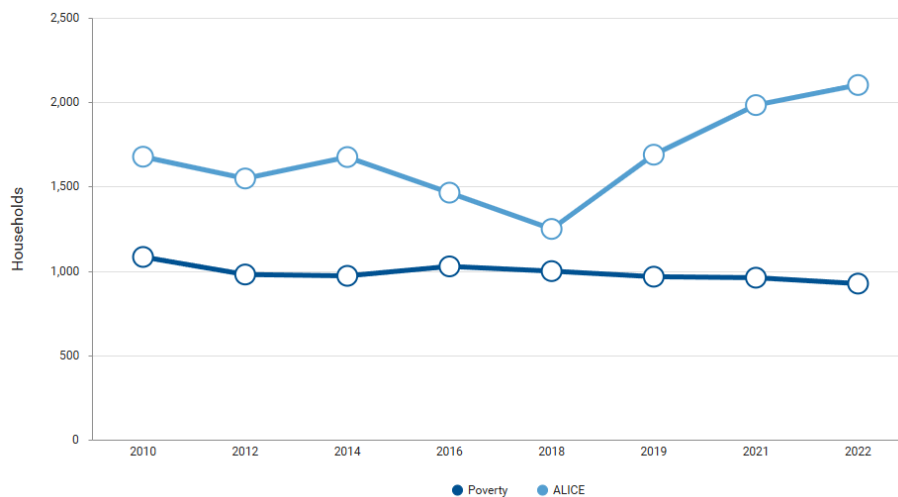
| Report Area | Pop. Age 16-19 Not in School or Not Employed |
|---------------|--|
| Fairfield | 11.48% |
| Illinois | 6.59% |
| United States | 6.94% |

Data Source: US Census Bureau, American Community Survey.

- » There are significant numbers of children living in poverty and ALICE households. ALICE is defined as Asset Limited, Income Constrained, Employed: Households that earn more than the FPL but less than the county's basic living costs. Basic costs include housing, childcare, food, transportation, health care, and a basic smartphone plan.

| Report Area | Pop. Age <18 Living in Poverty |
|---------------|--------------------------------|
| Fairfield | 19.003% |
| Illinois | 15.64% |
| United States | 16.66% |

Data Source: US Census Bureau, American Community Survey



Data Source: United Way of Northern New Jersey/United for ALICE

» Student dropout rates for community counties are high.

| Report Area | Graduates | Dropouts | Rate |
|----------------|-----------|----------|-------|
| Wayne County | 158 | 19 | 10.7% |
| White County | 147 | 12 | 7.5% |
| Edwards County | 64 | 4 | 5.9% |
| Illinois | 138,463 | 7,077 | 4.8% |

Data Source: ISBE Data Library

ACTIONS FAIRFIELD MEMORIAL HOSPITAL INTENDS TO TAKE TO ADDRESS THE HEALTH NEEDS

- » Investigate ways to collaborate with schools to provide students with education on healthy living. This can include mental, physical, and sexual health.
- » Educate students on the resources that are available in this community that can assist with healthy living.
- » Educate students on health career opportunities at FMH.
- » Offer job shadowing opportunities for students to gain a deeper understanding of health careers.

ANTICIPATED IMPACTS OF THESE ACTIONS

- » Students will be more knowledgeable about ways to improve their health and where to get help if they need it.
- » More students will be encouraged to stay in school and work towards a healthcare career.

PROGRAMS AND RESOURCES THAT THE HOSPITAL PLANS TO COMMIT TO ADDRESSING THE HEALTH NEEDS

- » Fairfield Memorial Hospital executive and leadership teams
- » Primary care and mental health providers
- » Educators
- » Social Workers

PLANNED COLLABORATION BETWEEN THE HOSPITAL AND OTHER FACILITIES OR ORGANIZATIONS:

- » Schools
- » Health Department

Priority #3

Health Improvement: Develop educational offerings and support to help people enhance their knowledge of ways to improve their health.

INDICATORS THAT SUPPORT THIS PRIORITY

- » 75% of community survey respondents indicated that Chronic Disease Management was one of the top five most important health issues in the community.
- » 16% of the community survey respondents indicated they needed help understanding their health insurance and how it works.
- » Access to basic needs (food, shelter, etc.) and access to medical care were in the top five most important health issues in the community, according to the community survey respondents.
- » Almost 35% of the households (5067/14463) have someone with a disability living in them. 18.9% of the population has a disability.
- » 22.51% of the service area population is 65+.
- » 18.0% of children in the service area have experienced food insecurity, as has 14.5% of the overall population.

| Report Area | Food Insecurity Rate | % of Food Insecure Children |
|---------------|----------------------|-----------------------------|
| Wayne County | 14.5% | 18% |
| Illinois | 11.63% | 15.66% |
| United States | 12.88% | 18.03% |

Data Source: Feeding America.

» Diabetes prevalence is increased in the Medicare population.

| Report Area | Diabetes Adults 20+ | Diabetes Medicare |
|---------------|---------------------|-------------------|
| Wayne County | 7.3% | 30% |
| Illinois | 8.2% | 26% |
| United States | 8.9% | 26% |

Data Source: Centers for Medicare and Medicaid Services

» Obesity rates are high. Obesity is defined as a body mass index (BMI) greater than or equal to 30 kg/m².

| Report Area | Obesity |
|---------------|---------|
| Wayne County | 37% |
| Illinois | 34% |
| United States | 34% |

Data Source: Centers for Disease Control and Prevention

» The percentage of Medicare recipients with high blood pressure (hypertension – HTN) is increased.

| Report Area | Medicare Beneficiaries with HTN |
|---------------|---------------------------------|
| Fairfield | 72% |
| Illinois | 66% |
| United States | 65% |

Data Source: Centers for Medicare and Medicaid Services

» Lung cancer rates are elevated, and the number of active smokers is increased.

| Report Area | Lung Cancer Incidences (cases/100,000 pop. per year) |
|---------------|---|
| Fairfield | 70.1 |
| Illinois | 59.3 |
| United States | 54.0 |

Data Source: State Cancer Profiles

| Report Area | Current Smokers |
|---------------|-----------------|
| Fairfield | 18.4% |
| Illinois | 13.3% |
| United States | 12.9% |

Data Source: Centers for Disease Control and Prevention

ACTIONS FAIRFIELD MEMORIAL HOSPITAL INTENDS TO TAKE TO ADDRESS THE HEALTH NEEDS

- » Using live and podcast venues, create educational programming that meets basic health educational needs as well as advanced education on selected topics.
- » Focus on the resources available in the community and how to help people access them.
- » Focus on connecting internal and external resources through the care coordination and discharge planning teams to ensure that when people are discharged, they have been linked to the resources they require.
- » Focus on controlling hypertension through education and healthy lifestyle activities.
- » Focus education on smoking and vaping cessation with students and the community.
- » Create programs for healthy living and exercise that are either low- or no-cost. Potentially partner with the parks and recreation within the community.
- » Reach out to the ministerial alliance or churches to share resources and assess their needs. Consider offering screenings and education to their congregants.

- » Collaborate with community businesses to offer educational programs and screenings for their employees.
- » Investigate the formation of support groups for people with health conditions such as diabetes.
- » Leverage the new laboratory testing platform for sexually transmitted infections (STIs).

ANTICIPATED IMPACTS OF THESE ACTIONS

- » People in the community will learn tactics to improve their health. This could include knowledge of healthy eating and living, as well as education on selected health conditions.
- » People will know how and where to get the health information and assistance they need.
- » Over a series of years, the number of people in the community who have heart disease and heart disease-related complications, lung cancer, and diabetes will decrease.

PROGRAMS AND RESOURCES THAT THE HOSPITAL PLANS TO COMMIT TO ADDRESSING THE HEALTH NEEDS

- » Fairfield Memorial Hospital executive and leadership teams
- » Providers
- » Rural health clinic teams
- » Community Outreach
- » Marketing Team
- » Health Educators

PLANNED COLLABORATION BETWEEN THE HOSPITAL AND OTHER FACILITIES OR ORGANIZATIONS:

- » Mental Health Services
- » Health Department
- » Schools
- » Churches
- » Community Businesses

The CHNA report and action plans were approved by the Fairfield Memorial Board of Directors at their board meetings on June 23, 2025.

Notes: Statistics may vary slightly depending on the resource.



2025 Community Health Needs Assessment
303 NW 11th St | Fairfield, IL 62837 | (618) 842-2611